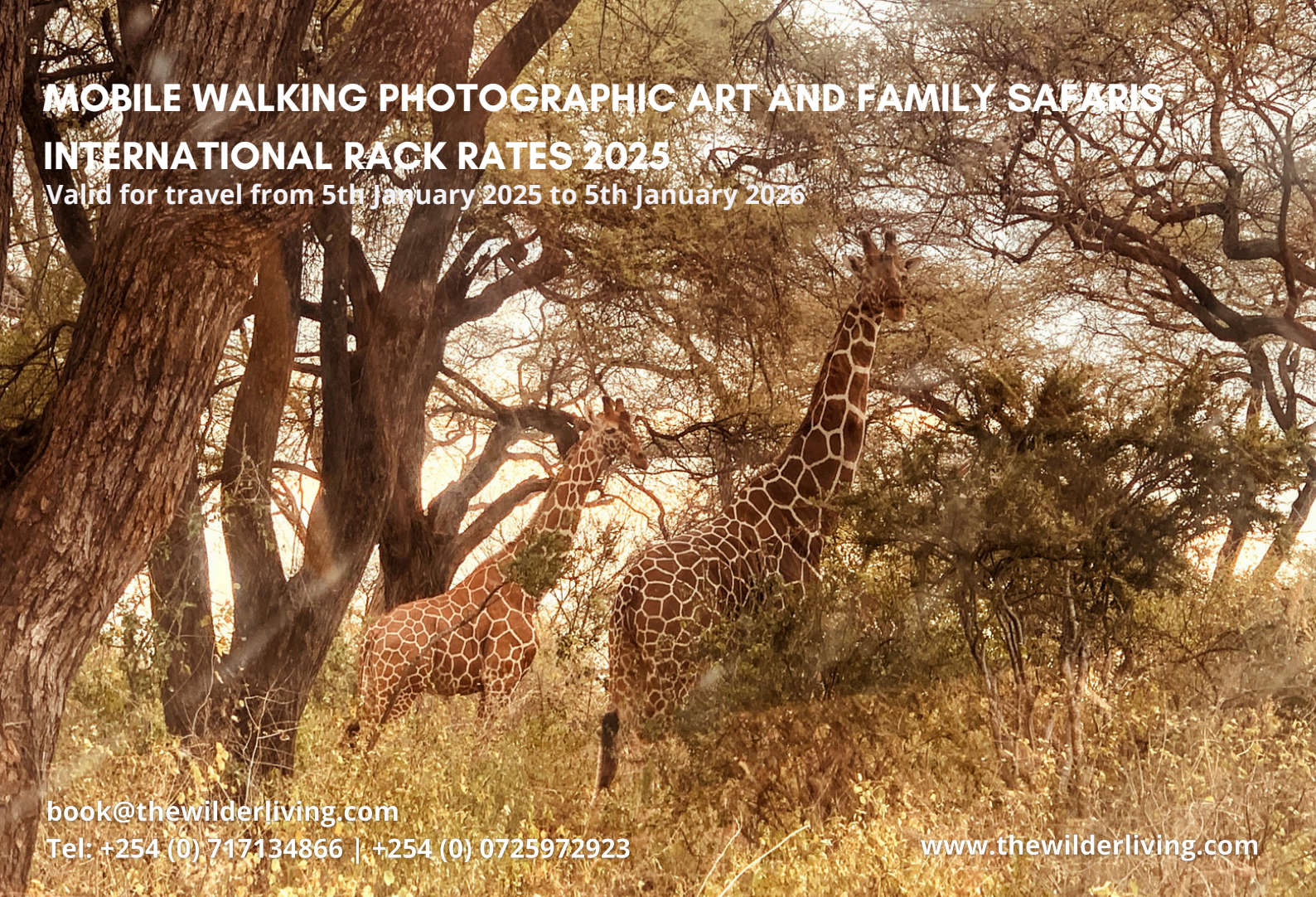


MOBILE WALKING PHOTOGRAPHIC ART AND FAMILY SAFARIS INTERNATIONAL RACK RATES 2025

Valid for travel from 5th January 2025 to 5th January 2026



book@thewilderliving.com

Tel: +254 (0) 717134866 | +254 (0) 0725972923

www.thewilderliving.com

Details	RACK RATE	RACK RATE
Accomodation	High Season	Mid Season
Adult Sharing	US\$674	US\$585
Single Suppliment	US\$850	US\$708
Children under 12	US\$352	US\$293

10% off total cost of stay for 3 nights or more
Accommodation max x8px up to 4 doubles and 4 / 6 singles

All Park and conservation Fees additional
Ngalai conservancy, Meru National, Aberdare National, Kiunga National, Lekerruki & Ilngwesi conservancy

HIGH SEASON 15th JUNE - 15th SEPTEMBER 2025 | 20th DECEMBER 2025 - 5th JANUARY 2026
MID SEASON 6th JANUARY - 14th JUNE 2025 | 16th SEPTEMBER - 19th DECEMBER 2025

WILDER LIVING MOBILE SAFARIS

INTERNATIONAL RACK RATES 2025

Valid for travel from 4th January 2025 to the 4th January 2026

INCLUDED

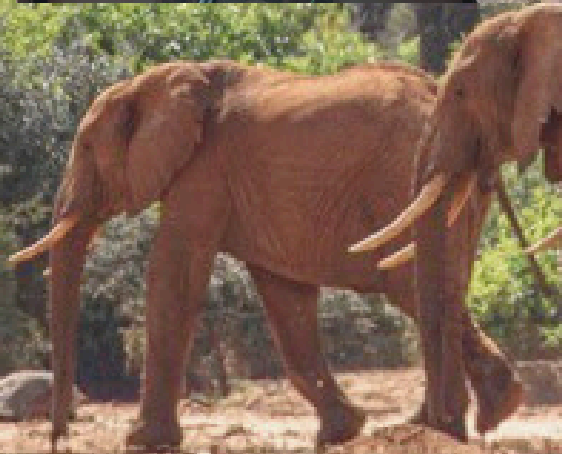
Accommodation Belle Tents
en-suite bathroom
Living & Dining Common Space Tent
Game Drives
Open Landcruiser Safari Vehicle
Professional Guiding
fishing & bush school
River rock pools and swimming
Catering & Drinks
Sundowners and picnics
Camp swing

EXCLUDED

Gratitudes
inter lodge/camp Transfers
Park Fees

ACTIVITIES AND GETTING AROUND

Guided Game Drives within parks and conservancies
Sundowners .
Day Trips with picnics.
walking safaris up to 6 hours walking morning and evening
History of places visits in Cultural visits meeting the people living at the destination
River Fishing and rock pools.
In Camp Kids Swing and swimming in the rock pools.
Game drives Birdviewing, botanicals, wildlife veiwing & tracking.
In camp bush survival school, making bows and arrows, learning to trap, fish and how to make fires and camp comfortably.
camp kitchen visits, how to make safari bread etc.
wildlife artists sketching what we see, afternoon art in camp
Board games & wildlife books and great settings to relax in.
Airstrip transfers to catch charter I flights or vehicle transfers between destinations
Guides and agents catered for with accomodation US\$150.
Guides basic accommodation US\$50.
scenic flights
Charter with Tropic Air or Pete White



TERMS AND CONDITIONS:

AVAILABILITY

Check availability on our availability calendar on our website or contact us directly

CHECK IN TIMES

Check in time is from 11:00am and check out time is 10:00am

PROVISIONAL BOOKING

Please email us at book@thewilderliving.com booking will be held provisionally. Should another provisional come in during the same time we will notify you unless you have already confirmed.

CONFIRMED BOOKING

A booking will only be confirmed on receipt of a 30% deposit.

We appreciate the following information on booking if possible.

Arrival and departure method and estimated time; flight details.

Number of people in the group and rooming requirement.

Any special dietary requirements or other special requests.

Names of all guests and all Ages, especially children.

Proof of residency for resident bookings.

Specific room you would like to book if preferred.

CANCELLATION POLICY

All cancellations must be made in writing.

More than 120 days the deposit is refunded net of bank charges.

Between 120 and 46 days prior to arrival the deposit is forfeited.

Between 45 and 30 days prior to arrival 50% of the full value is forfeited.

Less than 30 days and no shows, 100% of the full value is forfeited.

DEPOSITS

In order to confirm your booking you will need to pay a 30% deposit.

The full balance is payable in full 45 days prior to arrival.

TAXES

All costings are inclusive of VAT and all taxes.

We will forward a VAT invoice on request.

REFUNDS

Whilst Wilder Living endeavors to ensure that all anticipated accommodation is available as planned, there shall be no claim whatsoever against Wilder Living for a refund either in whole or in part, if any excursion or accommodation is unavailable.

INSURANCE

All people who travel to Wilder Mobile Safaris or undertake a tour with us; are required to have comprehensive travel and medical insurance to cover cancellation, medical expense, personal baggage and money.

COVID PROTOCOL

The outlined procedures and practices are in place at Wilder Mobile Safaris to prevent this and these can be sent on request.